

Pre-Finisher® Appliance

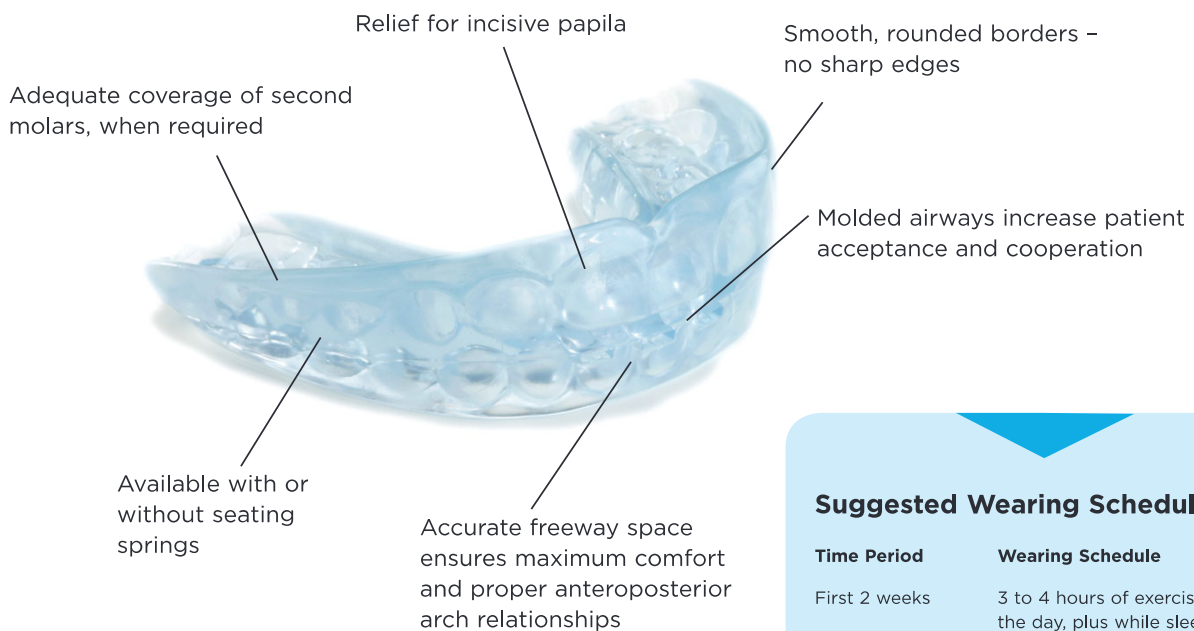
Clinically Proven for Over 30 Years

Let the Pre-Finisher appliance do the work of detailed finishing. Patients look forward to getting fixed appliances removed earlier, and you'll appreciate the final results without doing the demanding, intricate work.

Near the end of treatment, remove fixed appliances, measure and select a Pre-Finisher appliance from your in-office inventory kit — no impressions required. Enjoy these benefits with less work:

- Immediate delivery to the patient
- Corrects and relates teeth in both arches simultaneously
- Aligns, rotates and closes spaces
- Sized in one-millimeter increments for precise fitting
- Results in 2-3 weeks
- Economical; only one appliance needed

Exclusive features not available in any other pre-formed finishing appliance:



Size, in millimeters (last two digits of part number) molded into each appliance.

Suggested Wearing Schedule

Time Period	Wearing Schedule
First 2 weeks	3 to 4 hours of exercise during the day, plus while sleeping
Next 4 weeks	2 to 3 hours of exercise during the day, plus while sleeping
Next 6 weeks	2 hours of exercise during the day, plus while sleeping
Next 2 to 3 months	1 hour of exercise during the day, plus while sleeping
After 6 months	Can be worn while sleeping to act as a retainer

Instructions for Pre-Finisher Size Selection

First, choose the appropriate appliance type from the following series: non-extraction, four-bicuspid extraction, two upper bicuspid extraction or Asian four-bicuspid extraction. Use one of the Pre-Finisher rulers to measure for the correct size. The ruler may be used on the patient's right or left side, according to operator preference.

A reading may be obtained one of two ways:

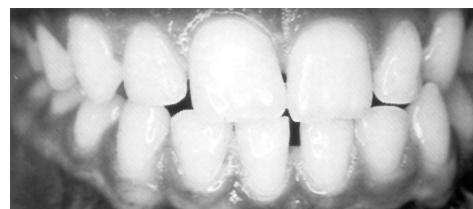
1. For quick, easy measurement in the mouth, use the condensed scale in the center of the ruler. Place the point distal to either the right or left upper cuspid. Curve the ruler along the incisal edges. Reading at midline indicates total mesiodistal width of upper anterior teeth. Note: Each mark on the condensed scale equals two millimeters.
2. For more accurate measurement in the mouth, or when measuring a model, use the full-length scale at the end of the ruler. Place the point distal to the upper right or left cuspid. Bend the ruler along the incisal edges. Take reading distally to the opposite cuspid. Once you have measured, select an appliance with a part number ending in two digits that match the millimeter measurement. If there are band spaces, select a Pre-Finisher one size (1mm) smaller.
3. Fit the Pre-Finisher appliance onto the upper teeth and have the patient close firmly into the appliance. The cuspids should be tightly in contact with the distal surfaces of their respective sockets. You will find a disposable ruler enclosed for every Pre-Finisher appliance in this kit. The millimeter ruler is designed to help you determine proper Pre-Finisher appliance size by measuring either six or three anterior teeth.

Pre-Finisher® Appliances Kits

An immediate, balanced supply of Pre-Finisher appliances. Kits include a detailed instruction booklet for the orthodontist, special millimeter ruler to facilitate size selection, a supply of patient instruction booklets and a convenient reorder form.

Convincer Kits

(10 Assorted Sizes)	Plain	With Seating Springs
Non-Extraction	190-010	190-110
Four Bicuspid Extraction	190-410	190-510
Two Upper Bicuspid Extraction	190-210	190-310



Before

Standard Kits

(15 Assorted Sizes)	Plain	With Seating Springs
Non-Extraction	190-015	190-115
Four Bicuspid Extraction	190-415	190-515
Two Upper Bicuspid Extraction	190-215	190-315



After

Thrift Kits

(20 Assorted Sizes)	Plain	With Seating Springs
Non-Extraction	190-020	190-120
Four Bicuspid Extraction	190-420	190-520
Two Upper Bicuspid Extraction	190-220	190-320

Pre-Finisher Appliances Individual

Last two digits of order number indicate size of Pre-Finisher in millimeters.

Non-Extraction Series

Can also be used on first molar extraction cases.

Plain			With Seating Springs		
190-040	190-047	190-054	190-140	190-147	190-154
190-041	190-048	190-055	190-141	190-148	190-155
190-042	190-049	190-056	190-142	190-149	190-156
190-043	190-050	190-057	190-143	190-150	190-157
190-044	190-051	190-058	190-144	190-151	190-158
190-045	190-052		190-145	190-152	
190-046	190-053		190-146	190-153	

Nineteen sizes (40mm to 58mm).

Four Bicuspid Extraction Series

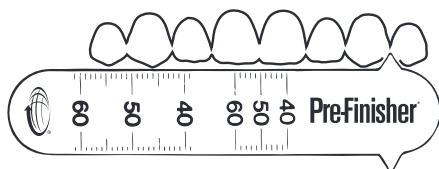
Plain			With Seating Springs		
190-444	190-450	190-456	190-544	190-550	190-556
190-445	190-451	190-457	190-545	190-551	190-557
190-446	190-452	190-458	190-546	190-552	190-558
190-447	190-453	190-459	190-547	190-553	190-559
190-448	190-454	190-460	190-548	190-554	190-560
190-449	190-455		190-549	190-555	

Seventeen sizes (44mm to 60mm).

Two Upper Bicuspid Extraction Series

Plain			With Seating Springs		
190-244	190-249	190-254	190-344	190-349	190-354
190-245	190-250	190-255	190-345	190-350	190-355
190-246	190-251	190-256	190-346	190-351	190-356
190-247	190-252		190-347	190-352	
190-248	190-253		190-348	190-353	

Thirteen sizes (44mm to 56mm).



Pre-Finisher Ruler

Single use. Disposable.

100-102 Pre-Finisher Ruler
Package of 5

Pre-Finisher Appliances

Asian

Non-Extraction

All Pre-Finishers are made with materials that are phthalate- and BPA-free. The Asian Non-Extraction appliance also has the following enhanced features and benefits.

- Increased Incisal Mamelon Ridge Definition — allows the fit to accommodate pronounced mamelon ridges.
- Decreased Clinical Crown Length — increase patient compliance due to comfort for patients with shorter clinical crown lengths. The gingiva is undisturbed allowing prolonged activation without irritation.
- Increased Airway Flow — redesign of the airway between the incisal edges to increase allowable airflow for patient comfort and extended wear time.

Asian Non-Extraction Series

Plain	
190-848	190-853
190-849	190-854
190-850	190-855
190-851	
190-852	

Eight sizes (48mm to 55mm).

Extraction

This series of four bicuspid extraction Pre-Finisher appliances has been designed to accommodate the unique dental characteristics of individuals with Asian dentitions. The sockets for the upper and lower anterior teeth have been broadened labiolingually to accommodate prominent marginal ridges and increased gingival crown thickness.

Asian Four Bicuspid Extraction Series

Plain		
190-644	190-649	190-654
190-645	190-650	190-655
190-646	190-651	190-656
190-647	190-652	190-657
190-648	190-653	

Fourteen sizes (44mm to 57mm).